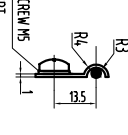
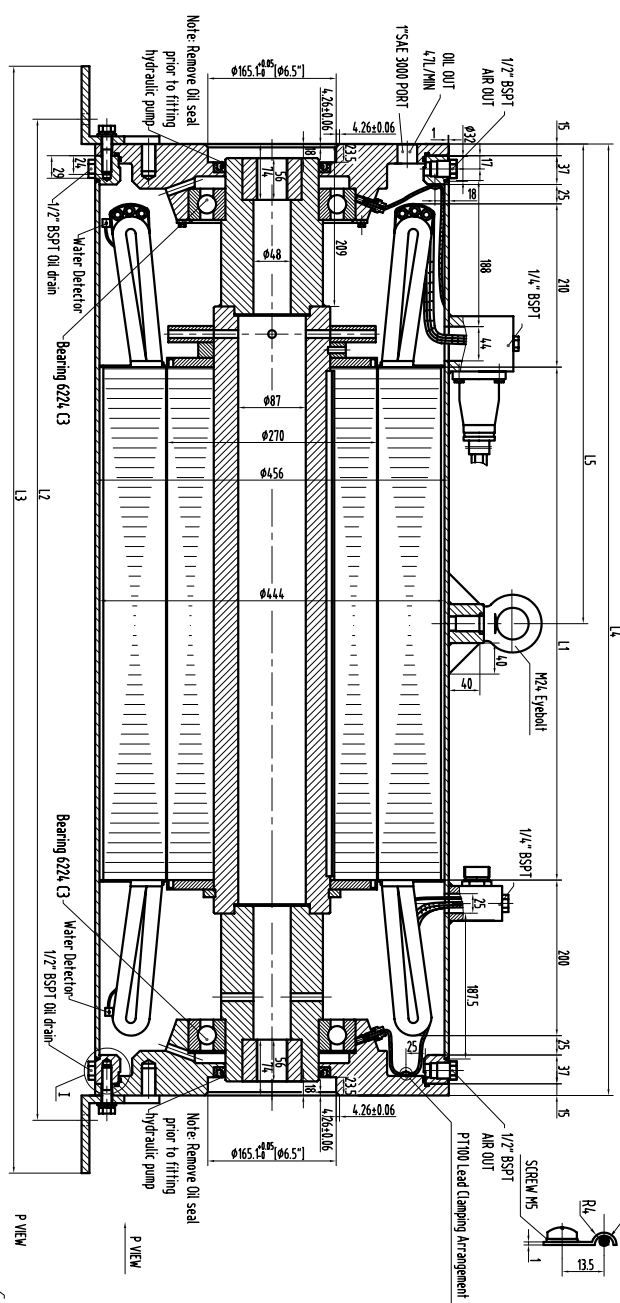
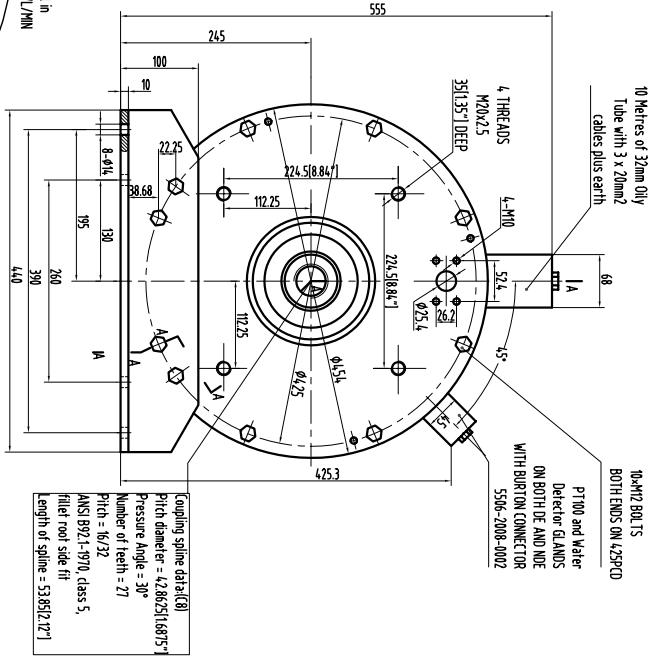


This document is the property of Summerside Motor Engineering Pty Ltd (SME) and is protected by copyright. The document and its contents are proprietary to SME and may not be passed to any other party without the prior written consent of SME.

A-A

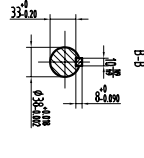
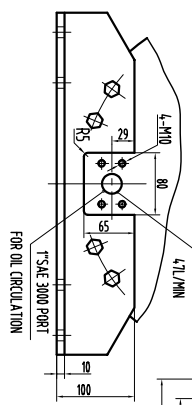
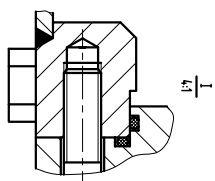


PT100 Lead Clamping Arrangement



NOTE:

1. PT100/Water Detector Block at both ends of motor.
2. Water detector at bottom of motor both ends.
3. 1 PT100 in the winding at each end, All PT100's are 3 wire.
4. Power cables in oily tube. SME can supply oily tube connector at junction box end.
5. BEARING PT100S to have braided leads which are clamped to endshield.
6. 1/2\"/>



POWER	Stack Length	L1	L2	L3	L4	L5	OIL VOLUME (LITRES)	Weight
400HP	300KW	500	1128	1264	1064	537	55	830
536HP	400KW	660	1288	1424	1224	617	56	1025

4.160V 3300V OR 3000V 60Hz with Sauer Danfoss Series 90 L250 Hydraulic pump on both end

NOTE:

Design can be modified to suit different Hydraulic Pumps.

APPROVED FOR MANUFACTURE

SIGNED \_\_\_\_\_ DATE \_\_\_\_\_

CROSS SECTION

TYPE	NAME	REVISION	WEIGHT	SCALE	MATERIAL
ROY184		A	See Table	-	SS316
NO.	1-010-0627	DESIGN BY	APPROVED BY	CHECKED BY	DATE 26/03/2010
<b>SUBMERSIBLE MOTOR ENGINEERING</b>					