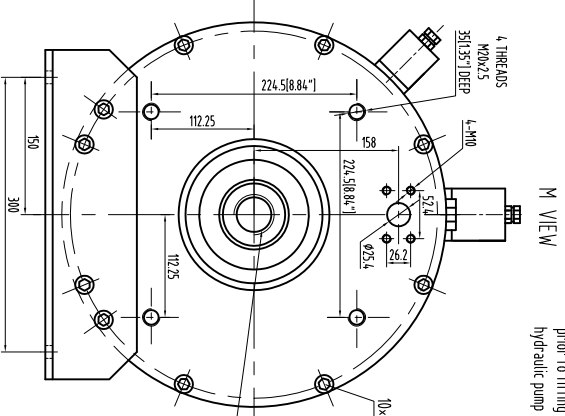
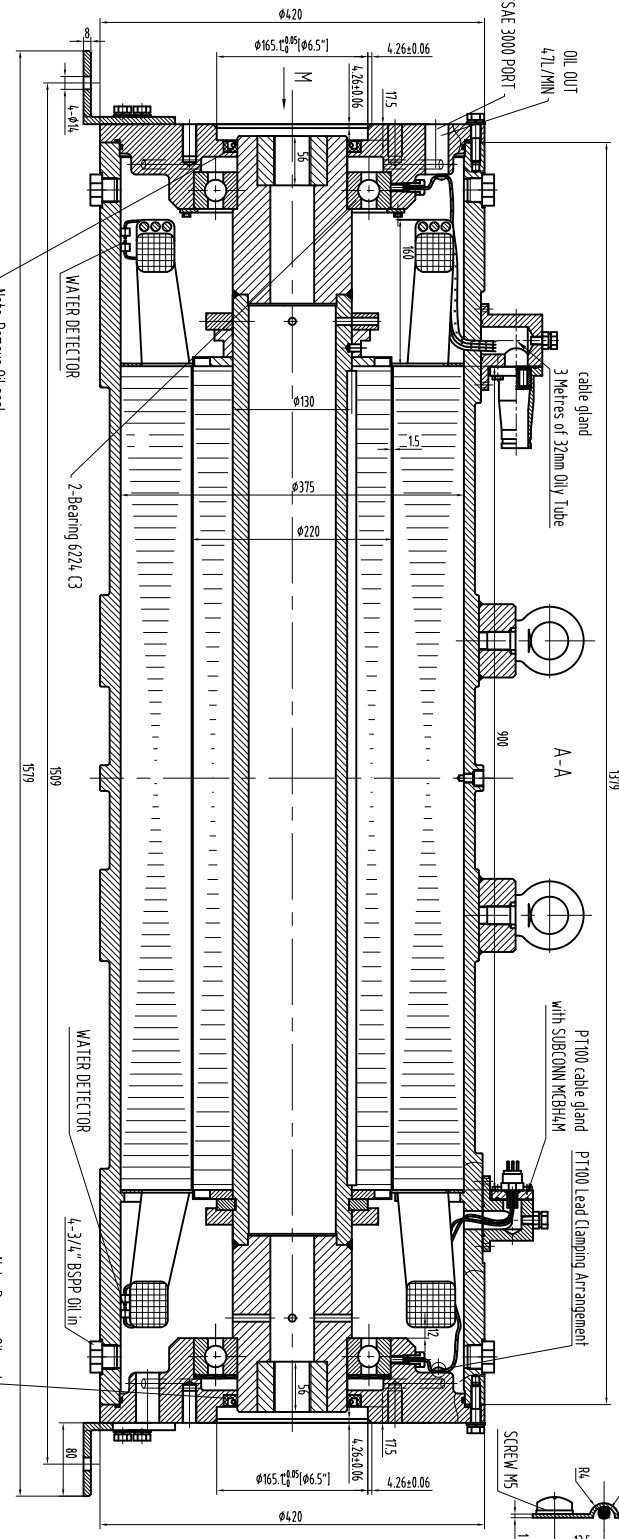
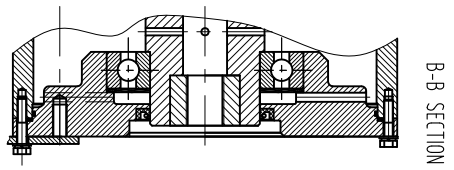
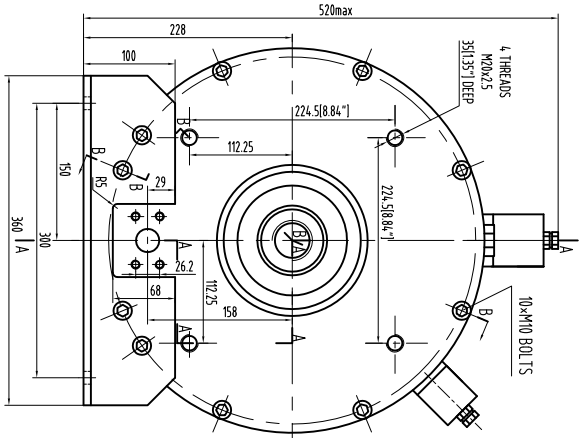


1720-010-1



COPYRIGHT  
RESERVED

This document is the property of Submersible Motor Engineering Pty Ltd (SME) and is protected by copyright. The document and its contents are proprietary to SME and may not be passed to any other party without the prior written consent of SME.



coupling spline data (18)  
Pitch diameter = (4236251.6875")  
Pressure Angle = 30°  
Number of teeth = 27  
Pitch = 16/32  
ANSI B92.1-1970, Class 5,  
filler root side fit  
length of spline = 53.892(12")

APPROVED FOR MANUFACTURE  
SIGNED \_\_\_\_\_ DATE \_\_\_\_\_

- NOTE:
1. PT100/Water Detector Block at both ends of motor.
  2. Water detector at bottom of motor both ends.
  3. 1 PT100 in the winding at each end. All PT100's are 3 wire.
  4. Power cables in oily tube. SME can supply oily tube connector at junction box end.
  5. BEARING PT100S to have braided leads which are clamped to endshield.

VOLTAGE 3300V 60HZ 300kW

TYPE	ROY16" 4POLE	NAME	Cross Section		
NO.	1-010-1156	REVISION	A	WEIGHT	818
DESIGN BY		APPROVED BY		SCALE	
CHECKED BY		DATE	02/05/2013	MATERIAL	6061 T6 Aluminium-Black Anodised
REVIEWED BY		<b>SUBMERSIBLE MOTOR ENGINEERING</b>			