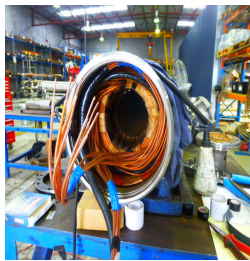




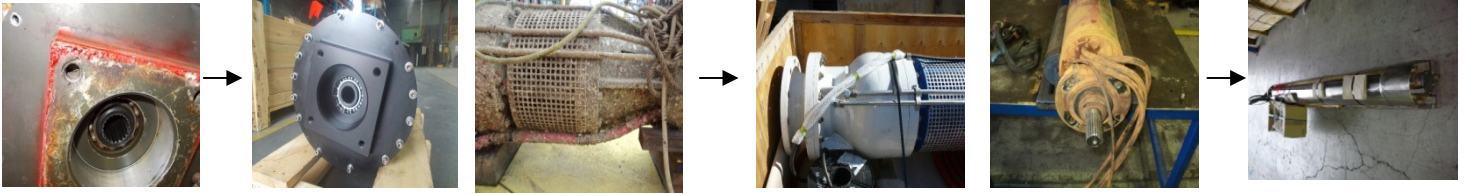
SUBMERSIBLE MOTOR ENGINEERING

Service, Repairs, Maintenance and Testing



Service and Repair of Submersible and Subsea Electric Motors

Before and After Photos



Submersible Motor Engineering's Workshop contains



Electrical repair shop, full machine shop, welding and fabrication shop, extensive motor and pump testing facilities



Capabilities include:

- Conducting complex electrical and mechanical repairs
- Rewinding of low and high voltage submersibles and subsea motors
- Ability to manufacture non OEM and obsolete components for cost effective and expedient repairs
- Engineer adapters/couplings to fit SME motors to a broad range of pumps
- Extensive stock of critical spares
- All repairs conducted by trained qualified technicians
- Full performance testing of submersible and subsea motors
- Pump performance and reliability testing
- Manual and CNC equipped machine shop enables repair or manufacture of components



MOTOR MODIFICATION

SME can modify and upgrade all brands of submersible electric motors during the repair and servicing process to meet the requirements of any application. These modifications can include changing materials, adding temperature sensors, re-design to suit different voltages and frequencies, applying protective coatings, offering extended cable lengths and splicing cables, replacing damaged, corroded, or worn parts and other application specific alterations. SME has the “in house” machining and fabrication capabilities to manufacture obsolete parts ensuring maximum life for motors are achieved.

IN-FIELD SUPPORT

SME can provide a number of site support services to ensure the reliability and performance of our clients' submersible motors. Our experienced field service engineers can provide installation, commissioning, fault finding supervision, and training.

MOTOR TESTING

SME's West Australian facility, located in Perth, provides for an extensive testing regime for repaired and overhauled motors. SME can full load test motors on our dynamometers and can also offer performance testing at the specified voltage and frequency up to 6600 volts.

PUMP TESTING

Our pump testing facility has two systems to cater for various tests. The high pressure system operates up to a maximum of 40 Bar and a maximum flow rate of 500 cubic meters per hour. While the low pressure system has a maximum pressure of 25 Bar and a maximum flow rate of 2000 cubic meters per hour.

SME can guarantee motors that have been serviced and repaired are fit for purpose before dispatch, providing customers with complete confidence in the work prior to re-installation. All motors that are rewound by SME are subject to an immersion pressure test which is conducted in our pressure test vessel to ensure the integrity of the windings prior to assembly and load testing. Our commitment to a strict testing regime protects our clients from the risks of downtime caused by unexpected failure.



SME Company Profile

Submersible Motor Engineering Pty Ltd is an Australian Company that designs and manufactures Submersible and Subsea Electric Motors for Global Markets. SME has the ability to design and produce specialist electric motors for complex applications, in many cases for a “1 off” requirement. SME should be the company of choice to work with to provide High Quality Engineered Solutions for your Submersible and Subsea Motor requirements.

SME offers a Repair, Rewind Modification, and Technical Support Service in Perth, and in Phoenix. Our facilities ensure that we can handle any job we are confronted with, regardless of complexity. Our purpose built testing facility ensures absolute confidence in workmanship and reliability for our clients.

When it comes to Sales and Service of Submersible and Subsea Motors, SME’s extensive range of Worldwide Locations ensures that we can provide excellent service and technical support on our own SME range of products, but also the products from all other manufacturers of Submersible Motors or Subsea Motors.



Submersible Motor Engineering Pty Ltd.

SME USA, INC.

9 Ryelane Street
Maddington, Perth
Western Australia, 6109
Tel:+61 8 9452 2922
Fax:+61 8 9452 2722

950 South 67th Avenue,
Phoenix, Arizona, 85043
USA
Tel:+1 623 478 1883
Fax:+1 623 478 1884

Email: sales@smeng.com.au

Website: www.smeng.com.au